



*.NET Family of Products  
Developer Guide*

Visit our online knowledge base at  
<http://www.adserverolutions.com/knowledge.html>

## Table of Contents

<b>1. Introduction</b> .....	<b>4</b>
<b>2. Framework Architecture</b> .....	<b>5</b>
<b>3. Project Directory Structure</b> .....	<b>7</b>
<b>4. Instructions for Source Package Compilation</b> .....	<b>8</b>
<b>5. API Definition for Framework Components</b> .....	<b>12</b>
WebF.Common.Configuration .....	12
Common.Configuration.View.....	12
Common.Configuration.AppMenu .....	12
Common.Configuration.ViewCollection.....	12
Common.Configuration.AppRoles .....	12
Common.Configuration.FrameworkVersion .....	14
Common.Configuration.DSCollection .....	14
Common.Configuration.DSCollection.DSEnumerator .....	16
Common.Configuration.DBSourceHandler.....	16
Common.Configuration.CommandType .....	17
Common.Configuration.AppRolesCollection.....	17
Common.Configuration.AppRolesCollection.DSEnumerator.....	19
Common.Configuration.AMCollection .....	19
Common.Configuration.DataSource.....	19
Common.Configuration.CmdCollection.....	20
Common.Configuration.CmdCollection.DSEnumerator.....	22
WebF.Common.DBLayer .....	22
Common.DBLayer.clsDBLayer .....	22
WebF.Common.Encryption .....	23
Common.Encryption.Rijndael.clsRijndael .....	23
Common.Encryption.clsbase64.clsbase64.....	25
Common.Encryption.clsProprietary.clsProprietary .....	25
Common.Encryption.md5.clsmd5 .....	26
WebF.Common.ExceptionHandler.....	26
WebF.Common.Logger .....	26
Common.Logger.clsLogger .....	26
WebF.Common.Messaging .....	27
Common.Messaging.clsEmail .....	27
WebF.Common.Security.....	27
Common.Security.clsApplicationSession.....	27
Common.Security.clsUserSession .....	28
WebF.Common.XMLProcessor .....	29
Common.XMLProcessor.clsXMLProcessor .....	29
WebF.Licensing .....	30
WebF.Mobile.TransactionBroker .....	30
Mobile.TransactionBroker.MobileTransactionManager .....	30
WebF.Samples .....	31
Samples.clsWebfSample.....	31
WebF.UI.BusinessManager .....	34
UI.BusinessManager.clsBusinessManager .....	34
UI.BusinessManager.clsAuthentication.....	35
WebF.UI.GenericBusinessMethods.....	35
UI.GenericBusinessMethods.clsGenericBusinessMethods .....	35

WebF.UI.MenuBuilder .....	36
UI.MenuBuilder.clsMenuBuilder .....	36
WebF.UI.QueryString.....	36
UI.QueryString.clsQueryString .....	36
WebF.UI.TransactionBroker.....	37
UI.TransactionBroker.TransactionManager .....	37
WebF.UI.XSLTransform .....	38
UI.XSLTransform.clsXSLTransform .....	38
WebF.WebService.TransactionBroker .....	39
WebService.TransactionBroker.WebServiceTransactionBroker .....	39
<b>6. API Definition for Ad Server Components .....</b>	<b>41</b>
<b>Webf.NET.OnlineAdvertising.....</b>	<b>41</b>
NET.OnlineAdvertising.clsAccounts .....	41
Methods.....	41
NET.OnlineAdvertising.clsPlacements .....	50
Methods.....	51
NET.OnlineAdvertising.clsAds .....	55
Methods.....	55
NET.OnlineAdvertising.clsCampaigns.....	55
Methods.....	56
NET.OnlineAdvertising.clsStatistics .....	58
Methods.....	59
NET.OnlineAdvertising.clsLogs.....	61
NET.OnlineAdvertising.clsBilling .....	61
Methods.....	61
NET.OnlineAdvertising.clsReference .....	67
Methods.....	67
<b>7. API Definition for Adserver Solutions Components .....</b>	<b>73</b>
Webf.NET.OnlineAdvertising .....	73
NET.OnlineAdvertising.clsAccounts .....	73
NET.OnlineAdvertising.clsPlacements .....	82
NET.OnlineAdvertising.clsAds .....	85
NET.OnlineAdvertising.clsCampaigns.....	86
NET.OnlineAdvertising.clsStatistics .....	88
NET.OnlineAdvertising.clsLogs.....	91
NET.OnlineAdvertising.clsBilling .....	91
NET.OnlineAdvertising.clsReference .....	96

## 1. Introduction

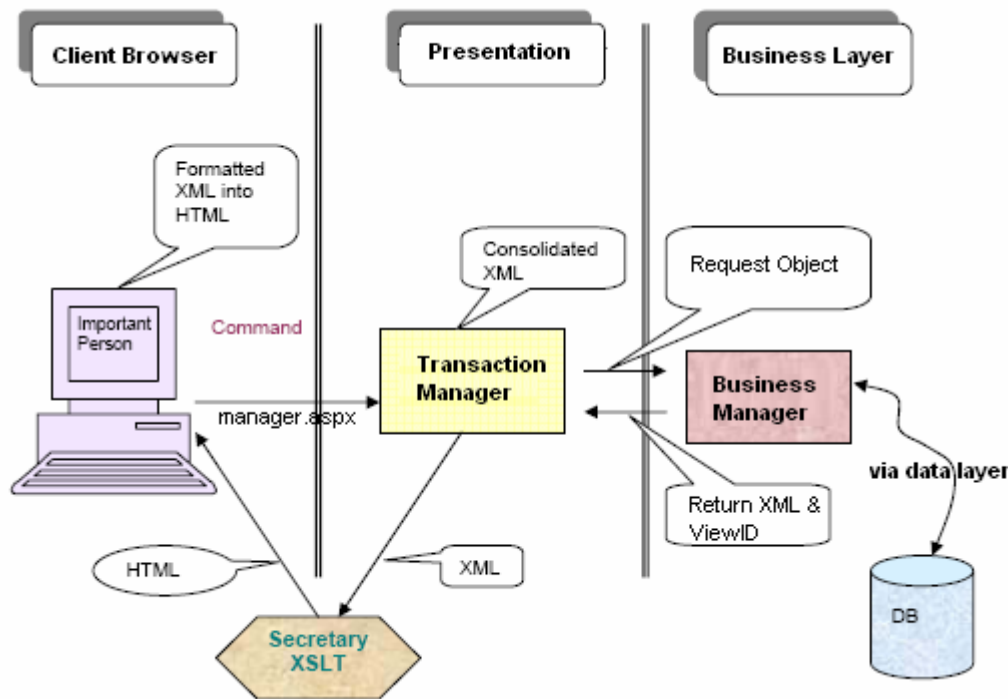
This developer guide is useful for customers who wish to engage their own IT teams to extend this application. This document provides the following information:

- Framework Architecture
- Project directory structure
- Compilation of source package
- API definition for framework components
- API definition for Adserver components

Intended readership of this document is architect, design and development teams.

## 2. Framework Architecture

Ad Server products are built using a 3-tier architecture, as depicted below.



Ad Server products use a framework called WebFrameworks. This framework comprises a secure, robust and tested architecture and several pre-built components that enable application developers to quickly build applications on top of the framework layer.

Developers who wish to enhance the current Ad Server system will be able to find numerous examples of how various framework APIs are used. This document also provides a full list of framework APIs.

If required, you may request a developer guide for WebFrameworks that will provide details on how to use the framework and its code generation capabilities. ApplicationBuilder directory of your package provides an Application Builder that can be used for production support and development activities. Password for each role is temp.

### Web Frameworks Packages/Namespace

Your WebF package will consist of namespaces/packages as shown below. These packages are broadly classified into **Common** and **UI**.

- WebF.Common.Compression
- WebF.Common.Configuration
- WebF.Common.DBLayer
- WebF.Common.Encryption
- WebF.Common.ExceptionHandler
- WebF.Common.Logger
- WebF.Common.Messaging

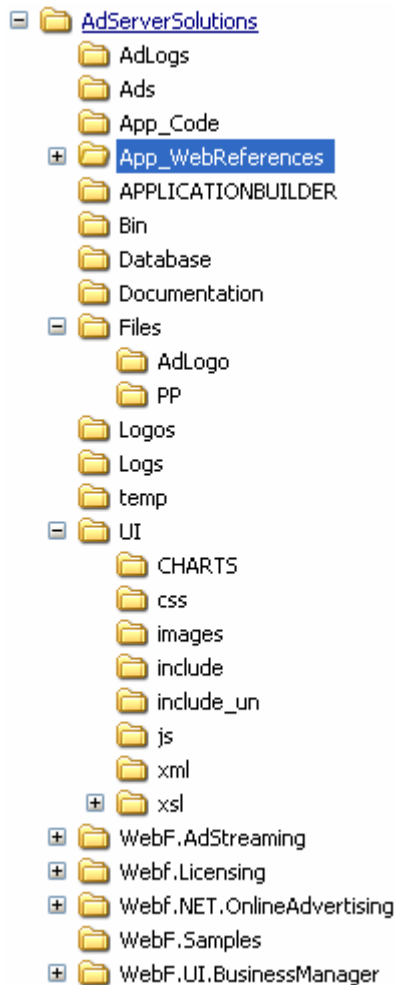
- WebF.Common.Security
- WebF.Common.WebServices
- WebF.Common.XMLProcessor
- \* WebF.UI.BusinessManager
- WebF.UI.GenericBusinessMethods
- WebF.UI.MenuBuilder
- WebF.UI.QueryString
- WebF.UI.TransactionBroker
- WebF.UI.TransactionBusinessBridge
- WebF.UI.XSLTransform

\* This namespace is made available along with source code. This source code will work as a starting point to build any new application. All other namespaces/packages are provided as dynamic linked libraries.

### **Flow Explained**

- Some common patterns used are MVC, Command Processor, Builder and VIP pattern.
- Any URL request to the web server must consist of a commandType that is passed as querystring to manager.aspx.
- Each commandType corresponds to a feature in the application and is an entry point for rendering any web page.
- A transaction manager is a first point of entry into the framework .Transaction manager performs several validation functions before passing on the web request to business manager.
- The common business manager may further be extended to build a complete application.
- Business managers will call data layer to execute SQLs.
- Data layer will return record set in xml format.
- XML can then be rendered in html format using standard transformation libraries (DOM or XSL).
- Returned html is rendered on the browser.

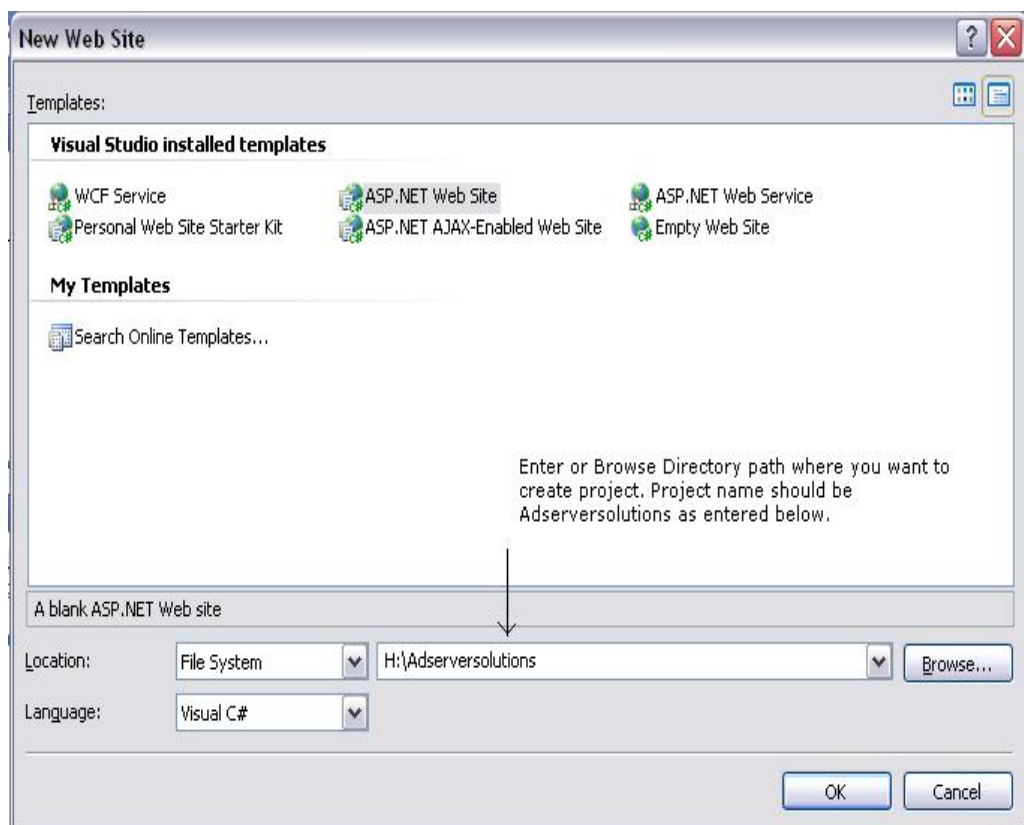
### 3. Project Directory Structure



1. AdLogs, Ads, Files, Logs, Logos – All these directories contain files uploaded by users or generated by the system.
2. App\_WebReferences – these contain wsdl files for communication of web server with business servers in enterprise environment.
3. ApplicationBuilder – This is a desk top based thin application that can be used to manage your development process. This includes code generation for common application features.
4. Bin – This contains all compiled dlls.
5. Database – This contains all database scripts that will be used to set up the application.
6. Documentation – This can be used to store documents.
7. Logs – This directory will contain log file. Logs are generated by the application.
8. UI
  - a. Charts – charting component
  - b. Css – Cascading stylesheets
  - c. Images – images used in the application
  - d. Include – all include files. These include files are part of manager.aspx.
  - e. Include\_un – all include files for aspx pages that can be integrated with the portal and are not part of the secure application access features.
  - f. Js – all javascripts
  - g. Xml – store xml files that may be consumed by the application. Adserver currently does not use any xml files.
  - h. Xsl – store xsl files that may be used to process the xml files or process in-memory xmls in the business components.
9. Webf.AdStreaming – This contains all code for adserver rotation components in several .cs files.
10. Webf.Licensing – This contains code for implementation of licensing mechanism.
11. Webf.NET.OnlineAdvertising – This contains all code for adserver online interface.
12. Webf.Samples – This contains some sample code for those starting out with building applications using web frameworks.
13. Webf.UI.BusinessManager – this contains code to drive all business logic and processes UI requests and hands them over to business components.

## 4. Instructions for Source Package Compilation

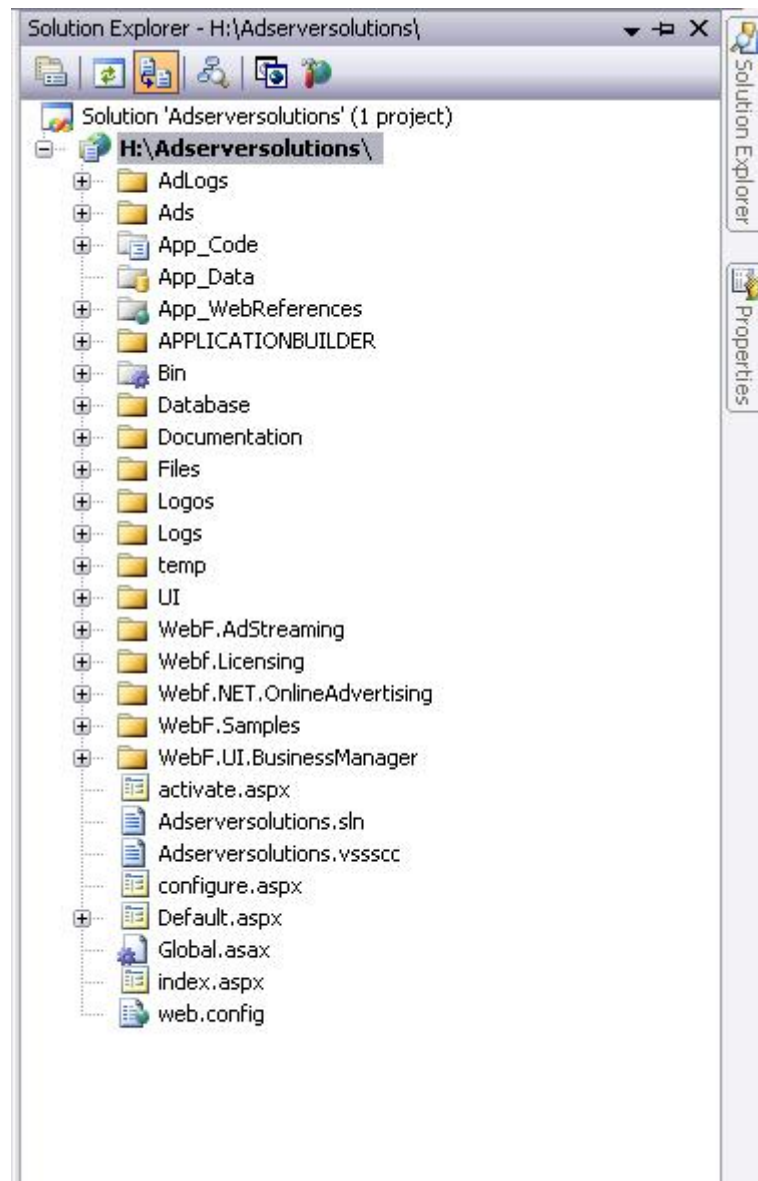
1. Download AdServerSolutions Source Package.
2. Unzip AdServerSolutions Source Package.
3. Open Visual Studio .net 2005 and Create New Web Site Project. Follow below steps to create new project.
  - In Visual Studio .net, Click on File -> New -> Web Site
  - Select Asp.Net Web Site in dialog box. Select File System in location drop down, Select Visual C# in language drop down and enter or browse path where you want to create project. Project name should be Adserversolutions and click ok. See below image for more details.



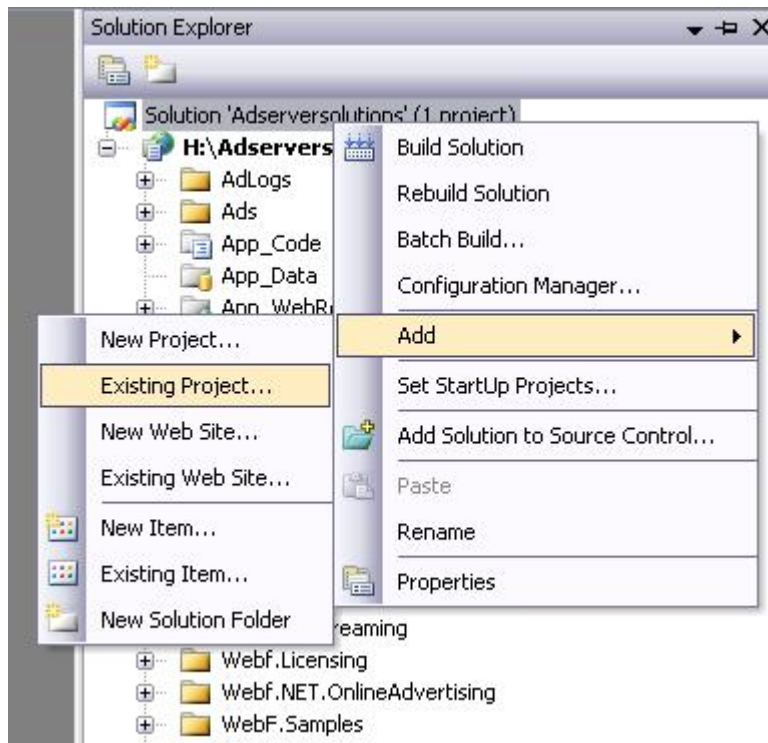
- Now Close Visual Studio .net.
4. Copy all folders/content of unzipped Adserversolutions package to your directory where you have created new Asp Web site project.
  5. Now in Windows Explorer, Go to MyDocuments -> Visual Studio 2005 -> Projects -> Adserversolutions. Here you will find Adserversolutions solution file, Copy this file to directory where you have created project. It will ask you to overwrite existing solution file, overwrite existing solution file.
  6. Now open AdserverSolution solution file just you have copied to your project directory.



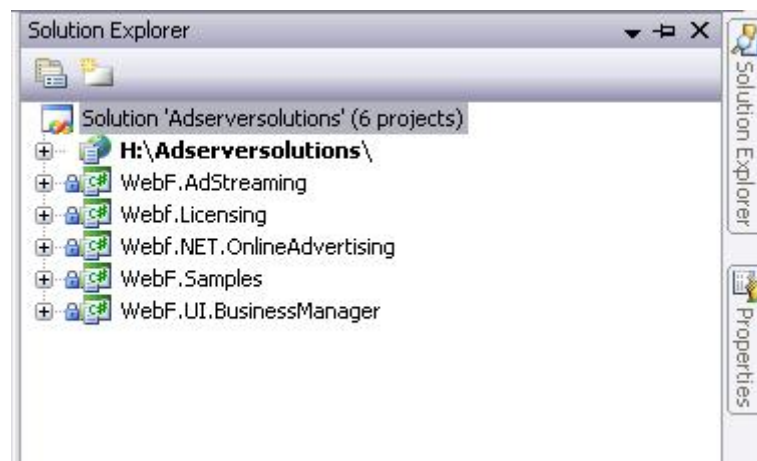
7. Click on Solution explorer in right panel. You will see directory structure like below.



8. Now you have to add 5 class projects to Adserversolutions project. For that follow the below steps.
  - Right click on solution file and click on add existing project as shown in image below.



- Now clicking on existing project, browse your project directory, open WebF.UI.BusinessManager folder and select WebF.UI.BusinessManager project file and click open.
- Repeat above steps for WebF.Samples, Webf.NET.OnlineAdvertising, WebF.AdStreaming and Webf.Licensing project.
- After adding all 5 projects you will see directory structure in solution explorer as shown in below image.



9. Now in Visual Studio, click on File -> Source Control -> Change Source Control. Click on Unbind and click ok.
10. Now open your project directory in Windows explorer and open bin folder. Delete below listed .dll from there.

- WebF.UI.BusinessManager.dll
- WebF.Samples.dll
- WebF.AdStreaming.dll
- Webf.NET.OnlineAdvertising.dll
- Webf.Licensing.dll

11. Now in Visual Studio, Click on menu Build -> Rebuild Solution, to compile AdServerSolutions source code.

## 5. API Definition for Framework Components

### ***WebF.Common.Configuration***

#### **Common.Configuration.View**

Summary description for View.

#### **Properties**

*Id*

*CallType*

*ReturnType*

*Path*

#### **Methods**

##### ***Constructor:***

- ***Common.Configuration.View(System.String, System.String, System.String, System.String)***

##### ***Parameters***

***id, callType, returnType, path,***

##### ***Constructor:***

- ***Common.Configuration.View***

#### **Common.Configuration.AppMenu**

Summary description for AppMenu.

#### **Common.Configuration.ViewCollection**

Summary description for ViewCollection.

#### **Common.Configuration.AppRoles**

Summary description for Roles.

## Properties

index, ,

## Methods

*Constructor:*

- *Common.Configuration.AppRoles*

*Constructor:*

- *Common.Configuration.AppRoles(WebF.Common.Configuration.AppRolesCollection)*

*Parameters*

value,

*Constructor:*

- *Common.Configuration.AppRoles(WebF.Common.Configuration.AppRoles[])*

*Parameters*

value,

- *Return Value*

,

- *Return Value*

,

- *Parameters*

value,

*Return Value*

,

- *Parameters*

value,

- *Parameters*

value,

- *Parameters*

value,

### *Return Value*

,

- *Parameters*  
array, index,

- *Parameters*  
value,

### *Return Value*

,

- *Parameters*  
index, value,

- *Return Value*

,

- *Parameters*  
dsName,

- *Parameters*  
value,

## **Common.Configuration.FrameworkVersion**

Summary description for FrameworkVersion.

### **Methods**

- *Version*

### *Return Value*

,

- *AppVersion*

### *Return Value*

,

## **Common.Configuration.DSCollection**

### **Properties**

*Item(System.Int32)*

index, ,

## Methods

### *Constructor:*

- 

*Common.Configuration.DSCollection(WebF.Common.Configuration.DSCollection)*

### *Parameters*

value,

### *Constructor:*

- 

*Common.Configuration.DSCollection(WebF.Common.Configuration.DataSource[])*

### *Parameters*

value,

- *SingleDS*

### *Return Value*

,

- *CollectionDs*

### *Return Value*

,

- *Add(WebF.Common.Configuration.DataSource)*

### *Parameters*

value,

### *Return Value*

,

- *AddRange(WebF.Common.Configuration.DataSource[])*

### *Parameters*

value,

- *AddRange(WebF.Common.Configuration.DSCollection)*

### *Parameters*

value,

- *Contains(WebF.Common.Configuration.DataSource)*

*Parameters*

value,

*Return Value*

,

- *CopyTo(WebF.Common.Configuration.DataSource[],System.Int32)*

*Parameters*

array, index,

- *IndexOf(WebF.Common.Configuration.DataSource)*

*Parameters*

value,

*Return Value*

,

- *Insert(System.Int32,WebF.Common.Configuration.DataSource)*

*Parameters*

index, value,

- *GetEnumerator*

*Return Value*

,

- *Remove(System.String)*

*Parameters*

dsName,

- *Remove(WebF.Common.Configuration.DataSource)*

*Parameters*

value,

## **Common.Configuration.DSCollection.DSEnumerator**

## **Common.Configuration.DBSourceHandler**

### **Methods**

- *Create(System.Object,System.Object,System.Xml.XmlNode)*



### *Parameters*

parent, context, node,

### *Return Value*

,

## **Common.Configuration.CommandType**

Summary description for CommandType.

### **Methods**

#### *Constructor:*

- *Common.Configuration.CommandType(System.String, System.String, System.String, System.String, System.String, System.String, System.String, System.String)*

### *Parameters*

id, dbObjectType, dbObject, viewID, type, dataSource, featureType, secure,

#### *Constructor:*

- *Common.Configuration.CommandType*

## **Common.Configuration.AppRolesCollection**

Summary description for AppRolesCollection.

### **Properties**

*Item(System.Int32)*

index, ,

### **Methods**

#### *Constructor:*

- *Common.Configuration.AppRolesCollection*

#### *Constructor:*

- *Common.Configuration.AppRolesCollection(WebF.Common.Configuration.AppRolesCollection)*

### *Parameters*

value,

**Constructor:**

- ***Common.Configuration.AppRolesCollection(WebF.Common.Configuration.AppRoles[])***

**Parameters**

value,

- ***SingleDS***

**Return Value**

,

- ***CollectionDs***

**Return Value**

,

- ***Add(WebF.Common.Configuration.AppRoles)***

**Parameters**

value,

**Return Value**

,

- ***AddRange(WebF.Common.Configuration.AppRoles[])***

**Parameters**

value,

- ***AddRange(WebF.Common.Configuration.AppRolesCollection)***

**Parameters**

value,

- ***Contains(WebF.Common.Configuration.AppRoles)***

**Parameters**

value,

**Return Value**

,

- ***CopyTo(WebF.Common.Configuration.AppRoles[],System.Int32)***

*Parameters*

array, index,

- *IndexOf(WebF.Common.Configuration.AppRoles)*

*Parameters*

value,

*Return Value*

,

- *Insert(System.Int32, WebF.Common.Configuration.AppRoles)*

*Parameters*

index, value,

- *GetEnumerator*

*Return Value*

,

- *Remove(System.String)*

*Parameters*

dsName,

- *Remove(WebF.Common.Configuration.AppRoles)*

*Parameters*

value,

## **Common.Configuration.AppRolesCollection.DSEnumerator**

## **Common.Configuration.AMCollection**

Summary description for AMCollection.

## **Common.Configuration.DataSource**

### **Methods**

*Constructor:*

•

*Common.Configuration.DataSource(System.String, System.String, System.String, System.String)*

*Parameters*

**connString, connType, database, name,**

## **Common.Configuration.CmdCollection**

Summary description for CmdCollection.

### **Properties**

*Item(System.Int32)*

**index, ,**

### **Methods**

*Constructor:*

- *Common.Configuration.CmdCollection*

*Constructor:*

- *Common.Configuration.CmdCollection(WebF.Common.Configuration.CmdCollection)*

*Parameters*

**value,**

*Constructor:*

- *Common.Configuration.CmdCollection(WebF.Common.Configuration.CommandType[])*

*Parameters*

**value,**

- *SingleDS*

*Return Value*

,

- *CollectionDs*

*Return Value*

,

- *Add(WebF.Common.Configuration.CommandType)*

*Parameters*

**value,**

***Return Value***

,

- ***AddRange(WebF.Common.Configuration.CommandType[])***

***Parameters***

value,

- ***AddRange(WebF.Common.Configuration.CmdCollection)***

***Parameters***

value,

- ***Contains(WebF.Common.Configuration.CommandType)***

***Parameters***

value,

***Return Value***

,

- ***CopyTo(WebF.Common.Configuration.CommandType[],System.Int32)***

***Parameters***

array, index,

- ***IndexOf(WebF.Common.Configuration.CommandType)***

***Parameters***

value,

***Return Value***

,

- ***Insert(System.Int32,WebF.Common.Configuration.CommandType)***

***Parameters***

index, value,

- ***GetEnumerator***

***Return Value***

,

- ***Remove(System.String)***

***Parameters***

dsName,

- *Remove(WebF.Common.Configuration.CommandType)*

*Parameters*

value,

## Common.Configuration.CmdCollection.DSEnumerator

## WebF.Common.DBLayer

### Common.DBLayer.clsDBLayer

Summary description for clsDBLayer. This class is contain methods to get connection string from web.config, to open and close connection to execute Sql statement and Store Procedure with overloaded methods and to PrepareXML From RecordSet.

### Methods

- *open(System.String)*

This function will open connection with Specified DataSource.

*Parameters*

datasource,

- *close*

This function will close connection with Datasource.

- *GetConnectionString(System.String)*

If dataSource is "", then get default Connection String from web.config, else get string associated with that dataSource. Note that web.config will contain many datasources and associated connection strings.

*Parameters*

dataSource,

*Return Value*

,

- *Execute(System.String)*

*Parameters*

payload,

*Return Value*

,

- *Execute(System.String, System.String)*

*Parameters*

payload, datasource,

*Return Value*

,

- *PrepareXMLFromRecordSet(System.Data.OleDb.OleDbDataReader)*

Construct XML From recordset and return it to the calling function.

*Parameters*

sqlDR,

*Return Value*

,

## **WebF.Common.Encryption**

### **Common.Encryption.Rijndael.clsRijndael**

Summary description for common.

## **Methods**

### *Constructor:*

- *Common.Encryption.Rijndael.clsRijndael*
- *Encrypt(System.Byte[], System.Byte[], System.Byte[])*

Encrypt a byte array into a byte array using a key and an IV

*Parameters*

clearData, Key, IV,

*Return Value*

,

- *Encrypt(System.String, System.String)*

Encrypt a string into a string using a password Uses Encrypt(byte[], byte[], byte[])

*Parameters*

**clearText, vEncStr,**

***Return Value***

,

- ***Encrypt(System.Byte[],System.String)***

Encrypt bytes into bytes using a password Uses Encrypt(byte[], byte[], byte[])

***Parameters***

**clearData, Password,**

***Return Value***

,

- ***Encrypt(System.String,System.String,System.String)***

Encrypt a file into another file using a password

***Parameters***

**fileIn, fileOut, Password,**

- ***Decrypt(System.Byte[],System.Byte[],System.Byte[])***

Decrypt a byte array into a byte array using a key and an IV

***Parameters***

**cipherData, Key, IV,**

***Return Value***

,

- ***Decrypt(System.String,System.String)***

Decrypt a string into a string using a password Uses Decrypt(byte[], byte[], byte[])

***Parameters***

**cipherText, vEncStr,**

***Return Value***

,

- ***Decrypt(System.String,System.String,System.String)***

***Parameters***

**fileIn, fileOut, Password,**

- ***EncryptString(System.String,System.String)***



*Parameters*

vStr, vEncStr,

*Return Value*

,

- *DecryptString(System.String, System.String)*

*Parameters*

vStr, vEncStr,

*Return Value*

,

**Common.Encryption.clsbase64.clsbase64**

Summary description for common.

**Methods**

*Constructor:*

- *Common.Encryption.clsbase64.clsbase64*
- *Decrypt(System.String, System.String)*

*Parameters*

stringToDecrypt, sEncryptionKey,

*Return Value*

,

- *Encrypt(System.String, System.String)*

*Parameters*

stringToEncrypt, SEncryptionKey,

*Return Value*

,

**Common.Encryption.clsProprietary.clsProprietary**

**Methods**

*Constructor:*

- *Common.Encryption.clsProprietary.clsProprietary*

- *Encrypt(System.String)*

*Parameters*

strToEnc,

*Return Value*

,

- *Decrypt(System.String)*

*Parameters*

strToDec,

*Return Value*

,

## **Common.Encryption.md5.clsmd5**

Summary description for Class1.

### **Methods**

*Constructor:*

- *Common.Encryption.md5.clsmd5*

- *md5(System.String)*

*Parameters*

encrypt,

*Return Value*

,

## **WebF.Common.ExceptionHandler**

## **WebF.Common.Logger**

### **Common.Logger.clsLogger**

Summary description for clsLogger.

### **Methods**

- *LogMessage(System.String, System.String, System.String, System.String)*

This method will read the type of logging features switched on in the web.config file. Logging features include: [a] file [b] Event Viewer. Web.Config will also hold a parameter for the MessageLevel in the format EWID. An \* will be used to represent the level for which logging is not required. E.g. in production, we could have EW\*.Based on the features turned on, this method will log the messages based on current message level.Current Time will also be stored. The location/path of the log file will be read from web.config.

#### *Parameters*

sourceObject, messageLevel, messageCode, messageText,

#### *Return Value*

,

### **WebF.Common.Messaging**

#### **Common.Messaging.clsEmail**

Summary description for clsEmail.

#### **Methods**

- *SendMail(System.String, System.String, System.String, System.String)*

#### *Parameters*

vTo, vFrom, vSubject, vBody,

#### *Return Value*

,

### **WebF.Common.Security**

#### **Common.Security.clsApplicationSession**

Summary description for clsApplicationSession.

#### **Methods**

- *UpdateSessionParms(System.String, System.String)*

Update the record in session table for sid and put strParms into SessionParms column

#### *Parameters*

sid, strParms,

- *GetSessionField(System.String)*

Get Field method return the Value of Specified Node of an XML String.

***Parameters***

vName,

***Return Value***

,

- ***AddSessionField(System.String, System.String)***

***Parameters***

vName, vValue,

***Return Value***

,

- ***ModifySessionField(System.String, System.String)***

***Parameters***

vName, vValue,

***Return Value***

,

- ***RemoveSessionField(System.String)***

***Parameters***

vdbParams, vName,

***Return Value***

,

## **Common.Security.clsUserSession**

Summary description for clsUserSession.

### **Methods**

•

***CreateSession(System.String, System.String, System.String, System.String, System.String)***

***Parameters***

vUserID, vRole, vSource, vTZ, vIpAddr,

***Return Value***

,

- *ValidateSession(System.String)*

This function validates Session ID.

*Parameters*

vSID,

*Return Value*

,

## **WebF.Common.XMLProcessor**

### **Common.XMLProcessor.clsXMLProcessor**

Summary description for Class1.

#### **Methods**

- *ParseReturnCode(System.String)*

This method will accept an XML string and return the Return Code to the client.

*Parameters*

strXML,

*Return Value*

,

- *ParseReturnMessage(System.String)*

This method will accept an XML string and return the Return Message to the client.

*Parameters*

strXML,

*Return Value*

,

- *ReturnXMLNodeValue(System.String, System.String)*

This function will return value of a XML Node.

*Parameters*

dataXml, XMLNodeName,

*Return Value*

,

- *GetTag(System.String, System.String)*

*Parameters*

strXML, vTagName,

*Return Value*

,

- *UpdateTagValue(System.String, System.String, System.String)*

*Parameters*

strXML, vTagName, vTagValue,

*Return Value*

,

- *RemoveTag(System.String, System.String)*

Remove tag value from specified node.

*Parameters*

strXML, vTagName,

*Return Value*

,

- *AddTag(System.String, System.String, System.String)*

Add New Tag to XML.

*Parameters*

strXML, vTagName, vTagValue,

*Return Value*

,

## **[WebF.Licensing](#)**

## **[WebF.Mobile.TransactionBroker](#)**

### **[Mobile.TransactionBroker.MobileTransactionManager](#)**

Summary description for Class1.

## Methods

- *MobileTransactionProcessor(System.String)*

### *Parameters*

mbRequestXMLValue,

### *Return Value*

,

- *mbResEnc(System.String)*

### *Parameters*

mbResXml,

### *Return Value*

,

## [WebF.Samples](#)

### [Samples.clsWebfSample](#)

Summary description for clsWebfSample

## Methods

- *getHelpFeature(System.String)*

### *Parameters*

cmdType,

### *Return Value*

,

- *listWebF\_Sample\_List(System.String, System.String, System.String, System.String)*

### *Parameters*

\_cp, \_rp, \_userid, \_sessionid,

### *Return Value*

,

- *retrievelistWebF\_Sample\_List(System.String, System.String)*

### *Parameters*

*\_userid, \_sessionid,*

***Return Value***

,

•

***addWebF\_Sample\_Add(System.String, System.String, System.String, System.String, System.String, System.String, System.String)***

***Parameters***

*\_CategoryName, \_Description, \_Available, \_Type, \_mode, \_userid, \_sessionid,*

***Return Value***

,

•

***editWebF\_Sample\_Edit(System.String, System.String, System.String, System.String, System.String, System.String, System.String)***

***Parameters***

*\_CategoryName, \_Description, \_Available, \_Type, \_mode, \_userid, \_sessionid,*

***Return Value***

,

• ***listWebFActiveUsers(System.String, System.String)***

***Parameters***

*\_userid, \_sessionid,*

***Return Value***

,

• ***listWebF\_TZ(System.String, System.String)***

***Parameters***

*\_userid, \_sessionid,*

***Return Value***

,

• ***retrievelistWebF\_TZ(System.String, System.String)***

***Parameters***

*\_userid, \_sessionid,*

***Return Value***

,



•  
*editWebF\_Profile(System.String, System.String, System.String, System.String, System.String, System.String, System.String, System.String, System.String)*

*Parameters*

*\_Password, \_Name, \_Address, \_Cell, \_Email, \_TZ, \_mode, \_userid, \_sessionid,*

*Return Value*

,

•  
*editWebF\_Personalize(System.String, System.String, System.String, System.String, System.String, System.String, System.String, System.String, System.String, System.String, System.String, System.String, System.String, System.String, System.String, System.String, System.String, System.String, System.String, System.String)*

*Parameters*

*\_appRoot, \_uplFile, \_PgColor, \_LnkColor, \_PgFnt, \_PgFntSize, \_rdHeader, \_Hcolor, \_HFcolor, \_HFontSz, \_Tbackcolor, \_THcolor, \_THFcolor, \_THFSize, \_Fcolor, \_FFcolor, \_LangPref, \_TZ, \_SHBClr, \_SHFClr, \_SHFFont, \_SFSz, \_mode, \_userid, \_sessionid,*

*Return Value*

,

•  
*listWebF\_Language(System.String, System.String, System.String, System.String)*

*Parameters*

*\_cp, \_rp, \_userid, \_sessionid,*

*Return Value*

,

• *retrievelistWebF\_Language(System.String, System.String)*

*Parameters*

*\_userid, \_sessionid,*

*Return Value*

,

•  
*listWebF\_Help\_Manager(System.String, System.String, System.String, System.String)*

***Parameters***

***\_cp, \_rp, \_userid, \_sessionid,***

***Return Value***

,

•

***editWebF\_Help\_Manager\_Edit(System.String, System.String, System.String, System.String, System.String, System.String, System.String)***

***Parameters***

***\_FeatureName, \_FeatureSummary, \_FeatureDescription, \_mode, \_userid, \_sessionid,***

***Return Value***

,

***WebF.UI.BusinessManager***

***UI.BusinessManager.clsBusinessManager***

**Methods**

•

***Webf\_Web\_BusinessTransactionManager(System.String, System.Web.HttpRequest)***

Business Transaction Manager for Web

***Parameters***

***commandType, Request,***

***Return Value***

,

•

***Webf\_WebService\_BusinessTransactionManager(System.String, System.String)***

Business Transaction Manager for Webservice

***Parameters***

***commandType, Request,***

***Return Value***

,

- *Webf\_Mobile\_BusinessTransactionManager(System.String, System.String)*

Business Transaction Manager for Mobile

*Parameters*

commandType, mbRequestXmlPayload,

*Return Value*

,

## UI.BusinessManager.clsAuthentication

Summary description for authentication.

### Methods

- *ValidateSignOn(System.String, System.String, System.String, System.String)*

*Parameters*

source, userId, password, ipAddr,

*Return Value*

,

- *Webf\_ExtendedCommandTypeCheck(System.String)*

This method check Extended Command Type. This method will return true or false. For commandType which required limited access to features return false for that commandType else return true.

*Parameters*

\_cmdType,

*Return Value*

,

## WebF.UI.GenericBusinessMethods

### UI.GenericBusinessMethods.clsGenericBusinessMethods

Summary description for Class1.

### Methods

- *GenericAccessMethod(System.String)*

*Parameters*

**commandType,**

*Return Value*

,

## [WebF.UI.MenuBuilder](#)

### [UI.MenuBuilder.clsMenuBuilder](#)

Summary description for Class1.

#### **Methods**

- *BuildMenu(System.String)*

*Parameters*

qs,

*Return Value*

,

## [WebF.UI.QueryString](#)

### [UI.QueryString.clsQueryString](#)

Summary description for QueryString.

#### **Methods**

- *EncryptQS(System.String)*

Method to do Encryption of Query String.

*Parameters*

vQS,

*Return Value*

,

- *DecryptQS(System.String)*

Method to Decryption of Query String.

*Parameters*

vQS,

### *Return Value*

,

- *GetField(System.String)*

Get Field method return the Value of Specified Node of an XML String.

### *Parameters*

vName,

### *Return Value*

,

- *AddField(System.String, System.String)*

### *Parameters*

vName, vValue,

### *Return Value*

,

- *ModifyField(System.String, System.String)*

### *Parameters*

vName, vValue,

### *Return Value*

,

- *RemoveField(System.String)*

### *Parameters*

vName,

### *Return Value*

,

## **WebF.UI.TransactionBroker**

### **UI.TransactionBroker.TransactionManager**

Summary description for TransactionManager.

### **Methods**

•

- *TransactionProcessor(System.Web.HttpRequest, System.Web.HttpResponse)*

This method check command Type and according to that it will call Security class.

***Parameters***

**Request, Response,**

***Return Value***

,

- ***Stream2Browser(System.String, System.String)***

***Parameters***

**vHTML, callType,**

***Return Value***

,

- ***CheckErrors(System.String)***

Method to check Error Code.

***Parameters***

**XML,**

***Return Value***

,

## ***WebF.UI.XSLTransform***

### ***UI.XSLTransform.clsXSLTransform***

#### **Methods**

- ***Encoding***

***Return Value***

,

- ***XMLHeader***

***Return Value***

,

- ***TransformXMLDataUsingViewID(System.String, System.String)***

***Parameters***

**viewId, dataXML,**

### *Return Value*

,

- *TransformXMLFileUsingViewID(System.String, System.String)*

### *Parameters*

viewId, xmlPath,

### *Return Value*

,

- *TransformXMLDataUsingXSL(System.String, System.String)*

### *Parameters*

xslPath, dataXML,

### *Return Value*

,

- *TransformXMLFileUsingXSL(System.String, System.String)*

### *Parameters*

xslPath, xmlPath,

### *Return Value*

,

- *applicationPath*

### *Return Value*

,

## ***WebF.WebService.TransactionBroker***

### **WebService.TransactionBroker.WebServiceTransactionBroker**

Summary description for WebF.WebService.TransactionBroker.

### **Methods**

- *WebServiceTransactionProcessor(System.String)*

### *Parameters*

wsRequestXMLValue,

### *Return Value*

,

• *wsResEnc(System.String, System.String)*

*Parameters*

*wsResXml,*

*Return Value*

,





**m.String,System.String,System.String,System.String,System.String,System.String,System.String,System.String)**

### Parameters

**\_UserName, \_Password, \_Email, \_HomePage, \_Name, \_CompanyName, \_Phone, \_Address, \_Country, \_City, \_State, \_Zip, \_Fax, \_CreditCardNo, \_CreditCardType, \_IsActive, \_TZ, \_LangPref, \_mode, \_userid, \_GatewayCode, \_Expiry, \_sessionid, \_BillingType,**

### Return Value

,



**listadsAdvertiserManageAds(System.String,System.String,System.String,System.String,System.String,System.String,System.String,System.String,System.String)**

### Parameters

**\_PayTypeCode, \_PayTypeValid, \_CommType, \_commValue, \_ModeUpdate, \_mode, \_bannerCode, \_userid, \_sessionid, \_display, \_userCode, \_status,**

### Return Value

,



**addadsAdvertiserManageNewBanner(System.String,System.String,System.String,System.String,System.String,System.String,System.String,System.String,System.String,System.String,System.String,System.String,System.String,System.String,System.String,System.String,System.String,System.String)**

### Parameters

**\_AdCategory, \_BannerName, \_ZoneCode, \_BannerType, \_ImageURL, \_AppletType, \_fileArc, \_loop, \_control, \_ImgURL, \_HtmlAd, \_ImgLink, \_ImgWidth, \_ImgHeight, \_ImgBorder, \_ImgTarget, \_ImgUnderText, \_ImgTextLink, \_ImgWeight, \_mode, \_userid, \_sessionid, \_Campaign, \_Display, \_UserCode, \_TextLink, \_Role, \_MaxCPC, \_DailyBudget, \_BannerSource, \_AdvCode,**

### Return Value

,

- **editadsAdvertiserManageEditBanner(System.String,System.String, System.String,System.String,System.String,System.String,System.String, System.String, System.String, System.String, System.String, System.String, System.String, System.String, System.String, System.String, System.String, System.String, System.String, System.String, System.String)**

**Parameters**

**\_AdCategory, \_BannerName, \_ZoneCode, \_BannerType, \_ImageURL, \_AppletType, \_fileArc, \_loop, \_control, \_ImgURL, \_HtmlAd, \_ImgLink, \_ImgWidth, \_ImgHeight, \_ImgBorder, \_ImgTarget, \_ImgUnderText, \_ImgTextLink, \_ImgWeight, \_mode, \_userid, \_sessionid, \_Campaign, \_BannerCode, \_Display, \_UserCode, \_TextLink, \_Role, \_BannerSource,**

**Return Value**

,

- **listadsManageAffiliates(System.String,System.String,System.String, System.String)**

**Parameters**

**\_cp, \_rp, \_userid, \_sessionid,**

**Return Value**

,

- **addadsNewAffiliate(System.String,System.String,System.String, System.String, System.String, System.String, System.String, System.String, System.String, System.String, System.String, System.String, System.String, System.String, System.String, System.String, System.String, System.String, System.String, System.String, System.String)**

**Parameters**

**\_Company, \_UserName, \_Password, \_Email, \_HomePage, \_IsActive, \_Name, \_TaxID, \_Phone, \_Address, \_ClickThruPage, \_Country, \_City, \_State, \_Zip, \_Fax, \_Approved, \_mode, \_userid, \_sessionid, \_uc,**

**Return Value**

,

- **editadsEditAffiliates(System.String, System.String)**

#### Parameters

**\_Company, \_UserName, \_Password, \_Email, \_HomePage, \_IsActive, \_Name, \_TaxID, \_Phone, \_Address, \_ClickThruPage, \_Country, \_City, \_State, \_Zip, \_Fax, \_Approved, \_mode, \_userid, \_sessionid, \_UserCode,**

#### Return Value

,

- **retrieveAdvertiser(System.String, System.String, System.String)**

#### Parameters

**\_userid, \_sessionid, \_limitData,**

#### Return Value

,

- **retrieveAffiliates(System.String, System.String, System.String)**

#### Parameters

**\_userid, \_sessionid, \_limitData,**

#### Return Value

,

- **addAdsAddAffPstSale(System.String, System.String)**

#### Parameters

**\_AffiliateUserCode, \_BannerCode, \_PayTypeCode, \_SaleValue, \_ReferenceNumber, \_CountryOfSale, \_CommisionValue, \_SaleStatus, \_mode, \_userid, \_sessionid,**

#### Return Value

,

- **listAdsManageBanner(System.String,System.String)**

**Parameters**

\_userid, \_sessionid,

**Return Value**

,

- **retrievelistAdsManageBanner(System.String,System.String)**

**Parameters**

\_userid, \_sessionid,

**Return Value**

,

- **retrievelistAdsManageBanner(System.String,System.String,System.String)**

**Parameters**

\_userid, \_sessionid, \_limit,

**Return Value**

,

- **listadsManagePublisher(System.String,System.String,System.String, System.String,System.String,System.String,System.String)**

**Parameters**

\_cp, \_rp, \_userid, \_sessionid, \_searchOpt, \_searchText, \_mode,

**Return Value**

,

- **retrievelistadsManagePublisher(System.String,System.String)**

**Parameters**

\_userid, \_sessionid,

**Return Value**

,

- **editadsEditPublisher(System.String,System.String,System.String, Sys**

tem.String,System.String,System.String,System.String,System.String,  
System.String,System.String,System.String,System.String,System.Str  
ing,System.String,System.String,System.String,System.String,System  
.String,System.String,System.String,System.String,System.String,Sys  
tem.String,System.String,System.String,System.String,System.String  
)

### Parameters

\_UserName, \_Password, \_Email, \_HomePage, \_Name, \_CompanyName, \_Phone,  
\_Address, \_Country, \_City, \_State, \_Zip, \_Fax, \_CreditCardNo, \_Summary,  
\_Details, \_CreditCardType, \_Active, \_TZ, \_LangPref, \_mode, \_userid,  
\_GatewayCode, \_Expiry, \_data, \_queryData, \_sessionid,

### Return Value

,



editadsEditPublisherUN(System.String,System.String,System.String,  
System.String,System.String,System.String,System.String,System.Str  
ing,System.String,System.String,System.String,System.String,System  
.String,System.String,System.String,System.String,System.String,Sys  
tem.String,System.String,System.String,System.String,System.String,  
System.String,System.String,System.String)

### Parameters

\_UserName, \_Password, \_Email, \_HomePage, \_Name, \_CompanyName, \_Phone,  
\_Address, \_Country, \_City, \_State, \_Zip, \_Fax, \_CreditCardNo, \_Summary,  
\_Details, \_CreditCardType, \_Active, \_TZ, \_LangPref, \_mode, \_userid,  
\_GatewayCode, \_Expiry, \_sessionid,

### Return Value

,



addadsNewPublisher(System.String,System.String,System.String,Sys  
tem.String,System.String,System.String,System.String,System.String,  
System.String,System.String,System.String,System.String,System.Str  
ing,System.String,System.String,System.String,System.String,System  
.String,System.String,System.String,System.String,System.String,Sys  
tem.String,System.String,System.String,System.String)

### Parameters

\_UserName, \_Password, \_Email, \_HomePage, \_Name, \_CompanyName, \_Phone,  
\_Address, \_Country, \_City, \_State, \_Zip, \_Fax, \_CreditCardNo, \_Summary,  
\_Details, \_CreditCardType, \_Active, \_TZ, \_LangPref, \_mode, \_userid,  
\_GatewayCode, \_Expiry, \_sessionid, \_uc,

## Return Value

,

•

**editAdsEditNaProfile(System.String, System.String, System.String, System.String, System.String, System.String, System.String, System.String, System.String, System.String, System.String, System.String, System.String, System.String, System.String)**

## Parameters

**\_Password, \_Email, \_HomePage, \_Name, \_CompanyName, \_Phone, \_Address, \_Country, \_City, \_State, \_Zip, \_Fax, \_mode, \_userid, \_GatewayCode, \_sessionid,**

## Return Value

,

• **listTempOrder(System.String, System.String)**

## Parameters

**\_userid, \_sessionid,**

## Return Value

,

• **listTempPayment(System.String, System.String)**

## Parameters

**\_userid, \_sessionid,**

## Return Value

,

• **AdsDelete(System.String, System.String, System.String)**

## Parameters

**\_delWhat, \_Code, \_mode,**

## Return Value

,

•

**editAdsGWPreference(System.String, System.String, System.String, System.String, System.String, System.String)**

## Parameters

**\_GatewayCode, \_LoginId, \_GwPwd, \_TxnKey, \_mode, \_userid, \_sessionid,**

## Return Value

,

•

**addAdsUnNewPub(System.String, System.String)**

## Parameters

**\_UserName, \_Password, \_Email, \_HomePage, \_IsActive, \_Name, \_CompanyName, \_Phone, \_Address, \_Country, \_City, \_State, \_Zip, \_Fax, \_CreditCardNo, \_CreditCardType, \_Expiry, \_TZ, \_LangPref, \_GatewayCode, \_WebsiteSummary, \_WebsiteDetails, \_mode, \_userid,**

## Return Value

,

•

**listAdsUnListPub(System.String, System.String, System.String, System.String, System.String, System.String, System.String, System.String)**

## Parameters

**\_cp, \_rp, \_userid, \_sessionid, \_mode, \_AdCode, \_uc,**

## Return Value

,

•

**listListCategories(System.String, System.String, System.String, System.String)**

## Parameters

**\_cp, \_rp, \_userid, \_sessionid,**

## Return Value

,



- **editAdsEditFee(System.String, System.String, System.String, System.String, System.String)**

**Parameters**

**\_PublisherFee, \_FeeTerm, \_mode, \_userid, \_sessionid,**

**Return Value**

,

- **listAdsManageReseller(System.String, System.String, System.String, System.String, System.String, System.String, System.String, System.String, System.String, System.String)**

**Parameters**

**\_userid, \_sessionid, \_modeForm, \_modeQS, \_usercode, \_CompanyName, \_UserName, \_Password, \_Email, \_Name, \_Phone, \_Address,**

**Return Value**

,

- **addAdsNewResellerType(System.String, System.String, System.String, System.String)**

**Parameters**

**\_ResellerType, \_mode, \_userid, \_sessionid,**

**Return Value**

,

- **listAdsManageResellerType(System.String, System.String)**

**Parameters**

**\_userid, \_sessionid,**

**Return Value**

,

- **editAdsEditResellerType(System.String, System.String, System.String, System.String)**

**Parameters**

**\_ResellerType, \_mode, \_userid, \_sessionid,**

## Return Value

,

•

**advertiseOnNetwork(System.String, System.String, System.String, System.String, System.String, System.String, System.String, System.String)**

## Parameters

**\_PType, \_BidAmout, \_DailyBudget, \_BannerCode, \_mode, \_userid, \_sessionid,**

## Return Value

,

•

**retrievelistAdsUnListPub(System.String, System.String, System.String)**

## Parameters

**\_userid, \_sessionid, \_AdCatCode,**

## Return Value

,

•

**addAdsNetworkBidUn(System.String, System.String, System.String, System.String)**

## Parameters

**\_BannerName, \_mode, \_userid, \_sessionid,**

## Return Value

,

## ***NET.OnlineAdvertising.clsPlacements***

Summary description for clsPlacements

## Methods

### Constructor:

- **NET.OnlineAdvertising.clsPlacements**

- **addadsNewRegion(System.String, System.String, System.String, System.String, System.String, System.String, System.String)**

### Parameters

**\_RegionType, \_Name, \_Comments, \_mode, \_userid, \_sessionid,**

### Return Value

,

- **listadsManageZones(System.String, System.String)**

### Parameters

**\_userid, \_sessionid,**

### Return Value

,

- **addadsNewZone(System.String, System.String, System.String, System.String, System.String, System.String, System.String)**

### Parameters

**\_Name, \_Width, \_Height, \_mode, \_userid, \_sessionid,**

### Return Value

,

- **editadsEditRegion(System.String, System.String, System.String, System.String, System.String, System.String, System.String)**

### Parameters

**\_Name, \_Comments, \_mode, \_RegionType, \_userid, \_sessionid,**

### Return Value

,

- **editadsEditZone(System.String, System.String, System.String, System.String, System.String, System.String)**

**Parameters**

**\_Name, \_Width, \_Height, \_mode, \_userid, \_sessionid,**

**Return Value**

,

- **retrievelistadsBannerType**

**Return Value**

,

- **retrievelistadsManageZones(System.String, System.String, System.String)**

**Parameters**

**\_userid, \_sessionid, \_limitData,**

**Return Value**

,

- **retrievelistadsManageZonesUN(System.String, System.String, System.String, System.String)**

**Parameters**

**\_userid, \_sessionid, \_limitData, \_Role,**

**Return Value**

,

- **listadsManageRegion(System.String, System.String)**

**Parameters**

**\_userid, \_sessionid,**

**Return Value**

,

- **retrieveRegions(System.String, System.String, System.String)**

**Parameters**

\_userid, \_sessionid, \_limitData,

**Return Value**

,

- **retrieveRegionsUn(System.String, System.String, System.String, System.String)**

**Parameters**

\_userid, \_sessionid, \_limitData, \_Role,

**Return Value**

,

- **listadsManagePricing(System.String, System.String)**

**Parameters**

\_userid, \_sessionid,

**Return Value**

,

- **retrievelistadsManagePricing(System.String, System.String)**

**Parameters**

\_userid, \_sessionid,

**Return Value**

,



## ***NET.OnlineAdvertising.clsAds***

Summary description for clsAds

### **Methods**

#### **Constructor:**

- **NET.OnlineAdvertising.clsAds**
- **listadsAffCodes(System.String, System.String, System.String)**

#### **Parameters**

**\_bannercode, \_userid, \_sessionid,**

#### **Return Value**

,

- **editBannerTargeting(System.String, System.String, System.String, System.String, System.String, System.String, System.String)**

#### **Parameters**

**\_BannerCode, \_DataKey, \_Category, \_mode, \_userid, \_sessionid,**

#### **Return Value**

,

- **retrievelistListCategories(System.String, System.String)**

#### **Parameters**

**\_userid, \_sessionid,**

#### **Return Value**

,

## ***NET.OnlineAdvertising.clsCampaigns***

Summary description for clsCampaigns







- **editAdsRONPublishers(System.String,System.String,System.String, System.String,System.String,System.String)**

**Parameters**

**\_Publishers, \_mode, \_userid, \_sessionid, \_AdCategoryCode, \_CampCode,**

**Return Value**

,

- **addAds\_New\_Campaign\_Un(System.String,System.String)**

**Parameters**

**\_Name, \_IsDefault, \_StartDate, \_EndDate, \_ShowDays, \_CampType, \_MaxImpressions, \_MaxClickThrus, \_ImpPerDay, \_StartHour, \_EndHour, \_Keywords, \_EmailReports, \_LastSentReport, \_ShowBrowser, \_ShowOS, \_ShowCountry, \_IncludeIP, \_ExcludeIP, \_mode, \_userid, \_sessionid, \_userCode, \_bannerCode, \_regionCode, \_OrderNo, \_display, \_MobileTargetting, \_Channels, \_PType, \_BidAmt, \_DBudget, \_OType, \_Role, \_OrderID,**

**Return Value**

,

***NET.OnlineAdvertising.clsStatistics***

Summary description for clsStatistics

## Methods

### Constructor:

- **NET.OnlineAdvertising.clsStatistics**

- **listAdsStatisticsAdvertiser(System.String, System.String, System.String, System.String, System.String, System.String, System.String, System.String, System.String, System.String)**

### Parameters

**\_Advertiser, \_StartDate, \_EndDate, \_Duration, \_GroupLevel1, \_GroupLevel2, \_UniqueType, \_mode, \_userid, \_sessionid, \_QType, \_FType,**

### Return Value

,

- **GetAccountStats(System.String)**

### Parameters

**\_usercode,**

### Return Value

,

- **addadsPublisherTraffic(System.String, System.String, System.String, System.String, System.String, System.String, System.String)**

### Parameters

**\_UserCode, \_StartMonth, \_StartYear, \_EndMonth, \_EndYear, \_mode, \_userid, \_sessionid,**

### Return Value

,

- **listAdsStatisticsExchange(System.String, System.String, System.String, System.String, System.String)**

### Parameters

**\_UserCode, \_StartDate, \_EndDate, \_mode, \_userid, \_sessionid, \_Role,**

## Return Value

,

- **listAdsStatisticsAffiliate(System.String, System.String, System.String, System.String, System.String, System.String, System.String, System.String)**

## Parameters

**\_Advertiser, \_StartDate, \_EndDate, \_GroupLevel1, \_GroupLevel2, \_UniqueType, \_mode, \_userid, \_sessionid,**

## Return Value

,

- **addAdsResellerReport(System.String, System.String, System.String, System.String, System.String, System.String)**

## Parameters

**\_Rep, \_School, \_Student, \_Advertiser, \_mode, \_userid, \_sessionid,**

## Return Value

,

- **retrievelistadsManageRep(System.String, System.String)**

## Parameters

**\_userid, \_sessionid,**

## Return Value

,

- **retrievelistadsManageSchool(System.String, System.String, System.String)**

## Parameters

**\_userid, \_sessionid, \_Rep,**

## Return Value

,

- **retrievelistadsManageStudent(System.String, System.String, System.String)**

**Parameters**

\_userid, \_sessionid, \_School,

**Return Value**

,

- **retrievelistadsManageAdvertiser(System.String, System.String, System.String)**

**Parameters**

\_userid, \_sessionid, \_Student,

**Return Value**

,

- **listAdsListEarnings(System.String, System.String, System.String, System.String, System.String)**

**Parameters**

\_mode, \_userid, \_StartDate, \_EndDate, \_sessionid,

**Return Value**

,

***NET.OnlineAdvertising.clsLogs***

Summary description for clsLogs

***NET.OnlineAdvertising.clsBilling***

Summary description for clsBilling

**Methods**

**Constructor:**

- **NET.OnlineAdvertising.clsBilling**

- 

**addAdsPayment(System.String, System.String, System.String, System.**

**String,System.String,System.String,System.String,System.String,System.String,System.String,System.String,System.String,System.String,System.String, System.String,System.String)**

**Parameters**

**\_PayType, \_CardType, \_Name, \_Address, \_CardNumber, \_Expiry, \_CCV2, \_mode, \_userID, \_UserCode, \_Role, \_sessionID, \_Status, \_OrderCode, \_FinalPrice,**

**Return Value**

,

●

**listadsTempOrder(System.String,System.String,System.String, System.String,System.String,System.String)**

**Parameters**

**\_userid, \_sessionid, \_StartDate, \_EndDate, \_display, \_MoId,**

**Return Value**

,

●

**listAdsTempPayment(System.String,System.String,System.String, System.String)**

**Parameters**

**\_userid, \_sessionid, \_StartDate, \_EndDate,**

**Return Value**

,

●

**listAdsTempPayment(System.String,System.String,System.String, System.String,System.String)**

**Parameters**

**\_userid, \_sessionid, \_StartDate, \_EndDate, \_MOId,**

**Return Value**

,

- **listadsBillingHistory(System.String, System.String, System.String, System.String, System.String, System.String, System.String, System.String, System.String)**

**Parameters**

**\_advertiserid, \_mode, \_userID, \_sessionID, \_display, \_Role, \_StartDate, \_EndDate, \_status,**

**Return Value**

,

- **listAdsAffiliateSalesLog(System.String, System.String, System.String, System.String, System.String, System.String, System.String)**

**Parameters**

**\_userid, \_sessionid, \_StartDate, \_EndDate, \_Display, \_PayType, \_Status,**

**Return Value**

,

- **listadsAffiliateHistory(System.String, System.String, System.String, System.String, System.String, System.String, System.String, System.String)**

**Parameters**

**\_affiliateid, \_mode, \_userID, \_sessionID, \_StartDate, \_EndDate, \_Display, \_PayType, \_Status, \_Role,**

**Return Value**

,

- **addAdsNewAdvPayment(System.String, System.String, System.String, System.String, System.String, System.String, System.String)**

**Parameters**

**\_AdvertiserID, \_OrderID, \_ReceiptID, \_PaymentAmount, \_PaymentType, \_mode, \_Role, \_userid, \_sessionid,**

**Return Value**

,

- **addAdsNewAffPayment(System.String, System.String, System.String, System.String, System.String, System.String, System.String)**

**Parameters**

**\_AffiliateID, \_OrderID, \_ReceiptID, \_PaymentAmount, \_PaymentType, \_mode, \_userid, \_sessionid,**

**Return Value**

,

- **addadsAssignCredits(System.String, System.String, System.String, System.String, System.String)**

**Parameters**

**\_UserCode, \_TotalCredits, \_mode, \_userid, \_sessionid,**

**Return Value**

,

- **addadsTransferCredits(System.String, System.String, System.String, System.String, System.String)**

**Parameters**

**\_UserCode, \_UserCodeTo, \_TotalCredits, \_mode, \_userid, \_sessionid,**

**Return Value**

,

- **listadsNetAdminHistory(System.String, System.String, System.String, System.String, System.String, System.String)**

**Parameters**

**\_publisherid, \_mode, \_userID, \_sessionID, \_StartDate, \_EndDate,**

**Return Value**

,

- **editAds\_Hosting\_Plans(System.String, System.String, System.String, System.String, System.String, System.String, System.String)**



**ng, System.String, System.String, System.String, System.String, System.String, System.String, System.String)**

### Parameters

**\_Tier1Imps, \_Tier1Price, \_Tier2Imps, \_Tier2Price, \_Tier3Imps, \_Tier3Price, \_Tier4Imps, \_Tier4Price, \_Tier5Imps, \_Tier5Price, \_mode, \_userid, \_sessionid, \_display, \_Display,**

### Return Value

,

- **listAdsMsorder(System.String, System.String, System.String)**

### Parameters

**\_userid, \_sessionid, \_MasterOrderID,**

### Return Value

,

- **retrievelistAdsMsorder(System.String, System.String)**

### Parameters

**\_userid, \_sessionid,**

### Return Value

,

- **addAdsInvoice(System.String, System.String, System.String, System.String)**

### Parameters

**\_mode, \_userid, \_sessionid, \_MoId,**

### Return Value

,

- **listAdsApproveSales(System.String, System.String, System.String, System.String)**

### Parameters

**\_userid, \_sessionid, \_status, \_ID,**

### Return Value

,

- **editAdsEditApprove(System.String, System.String, System.String, System.String, System.String, System.String, System.String, System.String, System.String, System.String)**

**Parameters**

**\_BannerCode, \_PayTypeCode, \_SaleValue, \_ReferenceNumber, \_CountryOfSale, \_CommisionValue, \_SaleStatus, \_mode, \_userid, \_sessionid,**

**Return Value**

,

- **editAdsRebid(System.String, System.String, System.String, System.String, System.String)**

**Parameters**

**\_MaxBidAmount, \_DailyBudget, \_mode, \_userid, \_sessionid,**

**Return Value**

,

- **addAdsCreditAccount(System.String, System.String, System.String, System.String, System.String)**

**Parameters**

**\_PaymentAmount, \_mode, \_userid, \_UserCode, \_sessionid,**

**Return Value**

,

- **addAdsPaymentUN(System.String, System.String, System.String, System.String, System.String, System.String, System.String, System.String, System.String, System.String, System.String, System.String)**

**Parameters**

**\_PayType, \_CardType, \_Name, \_Address, \_CardNumber, \_Expiry, \_CCV2, \_mode, \_userID, \_UserCode, \_Role, \_sessionID, \_Status, \_OrderCode, \_FinalPrice, \_Modules,**

**Return Value**

,

## ***NET.OnlineAdvertising.clsReference***

Summary description for clsReference

### **Methods**

#### **Constructor:**

- **NET.OnlineAdvertising.clsReference**

- **listadsManageAffiliateCategories(System.String, System.String, System.String, System.String)**

#### **Parameters**

**\_cp, \_rp, \_userid, \_sessionid,**

#### **Return Value**

,

- **addadsNewAffiliateCategories(System.String, System.String, System.String, System.String)**

#### **Parameters**

**\_CategoryName, \_mode, \_userid, \_sessionid,**

#### **Return Value**

,

- **listadsManagePaytypes(System.String, System.String, System.String, System.String)**

#### **Parameters**

**\_cp, \_rp, \_userid, \_sessionid,**

#### **Return Value**

,

- **addadsAddPaytypes(System.String, System.String, System.String, System.String, System.String)**

#### **Parameters**

**\_PayType, \_PayTypeOnScreen, \_mode, \_userid, \_sessionid,**

## Return Value

,

- **editadsEditPaytypes(System.String, System.String, System.String, System.String, System.String, System.String, System.String)**

## Parameters

**\_PayType, \_PayTypeOnScreen, \_mode, \_userid, \_sessionid, \_PaytypeCode,**

## Return Value

,

- **editadsEditAffiliateCategories(System.String, System.String, System.String, System.String)**

## Parameters

**\_CategoryName, \_mode, \_userid, \_sessionid,**

## Return Value

,

- **editadsEditAdCategories(System.String, System.String, System.String, System.String, System.String, System.String)**

## Parameters

**\_AdCategoryName, \_Active, \_mode, \_userid, \_sessionid,**

## Return Value

,

- **addadsNewAdCategories(System.String, System.String, System.String, System.String, System.String, System.String, System.String)**

## Parameters

**\_AdCategoryName, \_Active, \_mode, \_Role, \_userid, \_sessionid,**

## Return Value

,

- **listadsManageAdCategories(System.String, System.String, System.String, System.String, System.String)**

**Parameters**

\_cp, \_rp, \_Role, \_userid, \_sessionid,

**Return Value**

,

- **retrievelistadsManageAdCategories(System.String, System.String, System.String)**

**Parameters**

\_userid, \_sessionid, \_Display,

**Return Value**

,

- **retrievePaytypes(System.String, System.String)**

**Parameters**

\_userid, \_sessionid,

**Return Value**

,

- **retrievePubPaytypes(System.String, System.String)**

**Parameters**

\_userid, \_sessionid,

**Return Value**

,

- **editadsEditPreference(System.String, System.String, System.String, System.String, System.String, System.String, System.String, System.String, System.String, System.String)**

**Parameters**

\_NotifySale, \_CookieLife, \_SignUpThanks, \_MassMailLetter, \_AffiliateLetter, \_AutoSalesApproval, \_AutoAffiliateApproval, \_AffiliateApprovalLetter, \_mode, \_userid, \_sessionid,

## Return Value

,

- **listAdsLang(System.String, System.String)**

## Parameters

\_userid, \_sessionid,

## Return Value

,

- **retrievelistAdsLang(System.String, System.String)**

## Parameters

\_userid, \_sessionid,

## Return Value

,

- **listMyPubChannels(System.String, System.String, System.String, System.String)**

## Parameters

\_CategoryID, \_mode, \_userid, \_sessionid,

## Return Value

,

- **listMyExchangeChannels(System.String, System.String, System.String, System.String, System.String)**

## Parameters

\_userid, \_sessionid,

## Return Value

,

- **listadsEditChannel(System.String, System.String, System.String, System.String)**

## Parameters

\_CategoryID, \_mode, \_userid, \_sessionid,

## Return Value

,

- 

**listaffEditChannel(System.String, System.String, System.String, System.String)**

## Parameters

**\_CategoryID, \_mode, \_userid, \_sessionid,**

## Return Value

,

- 

**editAds\_Xchange\_Pref(System.String, System.String, System.String, System.String, System.String)**

## Parameters

**\_CreditsPerImp, \_SignUpCredits, \_mode, \_userid, \_sessionid,**

## Return Value

,

- **total(System.String, System.String)**

## Parameters

**\_userid, \_sessionid,**

## Return Value

,

- **listAdsListGateway(System.String, System.String)**

## Parameters

**\_userid, \_sessionid,**

## Return Value

,

- 

**retrievelistAdsListGateway(System.String, System.String, System.String)**

## Parameters

**\_userid, \_sessionid, \_display,**

## Return Value

,

- **PersonalizedValue(System.String)**

## Parameters

\_userCode,

## Return Value

,

- **editAdsNaPref(System.String, System.String, System.String, System.String, System.String, System.String, System.String, System.String, System.String)**

## Parameters

\_Commission, \_Exchange, \_Bonus, \_Image, \_mode, \_userid, \_sessionid, \_QRole, \_hidRole,

## Return Value

,

- **addAdsNewChannel(System.String, System.String, System.String, System.String, System.String, System.String)**

## Parameters

\_AdCategoryName, \_Active, \_mode, \_userid, \_sessionid,

## Return Value

,



## 7. API Definition for Adserver Solutions Components

### [Webf.NET.OnlineAdvertising](#)

#### [NET.OnlineAdvertising.clsAccounts](#)

Summary description for clsAccounts

#### Methods

- *addadsNewAdvertiser(System.String, System.String)*

#### Parameters

*\_UserName, \_Password, \_Email, \_HomePage, \_Name, \_CompanyName, \_Phone, \_Address, \_Country, \_City, \_State, \_Zip, \_Fax, \_CreditCardNo, \_CreditCardType, \_IsActive, \_TZ, \_LangPref, \_mode, \_userid, \_GatewayCode, \_Expiry, \_sessionid, \_uc, \_GUID, \_BillingType, \_Status,*

#### Return Value

,

- *listadsManageAdvertisers(System.String, System.String, System.String, System.String, System.String, System.String, System.String)*

#### Parameters

*\_cp, \_rp, \_userid, \_usercode, \_sessionid, \_searchOpt, \_searchText, \_mode,*

#### Return Value

,

- *editadsEditAdvertiser(System.String, System.String)*

#### Parameters

*\_UserName, \_Password, \_Email, \_HomePage, \_Name, \_CompanyName, \_Phone, \_Address, \_Country, \_City, \_State, \_Zip, \_Fax, \_CreditCardNo, \_CreditCardType, \_IsActive, \_TZ, \_LangPref, \_mode, \_userid, \_GatewayCode, \_Expiry, \_sessionid, \_BillingType,*

***Return Value***

,



*listadsAdvertiserManageAds(System.String, System.String, System.String, System.String, System.String, System.String, System.String, System.String, System.String, System.String, System.String, System.String)*

***Parameters***

*\_PayTypeCode, \_PayTypeValid, \_CommType, \_commValue, \_ModeUpdate, \_mode, \_bannerCode, \_userid, \_sessionid, \_display, \_userCode, \_status,*

***Return Value***

,



*addadsAdvertiserManageNewBanner(System.String, System.String, System.String, System.String, System.String, System.String, System.String, System.String, System.String, System.String, System.String, System.String, System.String, System.String, System.String, System.String, System.String, System.String, System.String, System.String)*

***Parameters***

*\_AdCategory, \_BannerName, \_ZoneCode, \_BannerType, \_ImageURL, \_AppletType, \_fileArc, \_loop, \_control, \_ImgURL, \_HtmlAd, \_ImgLink, \_ImgWidth, \_ImgHeight, \_ImgBorder, \_ImgTarget, \_ImgUnderText, \_ImgTextLink, \_ImgWeight, \_mode, \_userid, \_sessionid, \_Campaign, \_Display, \_UserCode, \_TextLink, \_Role, \_MaxCPC, \_DailyBudget, \_BannerSource, \_AdvCode,*

***Return Value***

,



*editadsAdvertiserManageEditBanner(System.String, System.String, System.String, System.String, System.String, System.String, System.String, System.String, System.String, System.String, System.String, System.String, System.String, System.String, System.String, System.String, System.String, System.String, System.String)*

### *Parameters*

*\_AdCategory, \_BannerName, \_ZoneCode, \_BannerType, \_ImageURL, \_AppletType, \_fileArc, \_loop, \_control, \_ImgURL, \_HtmlAd, \_ImgLink, \_ImgWidth, \_ImgHeight, \_ImgBorder, \_ImgTarget, \_ImgUnderText, \_ImgTextLink, \_ImgWeight, \_mode, \_userid, \_sessionid, \_Campaign, \_BannerCode, \_Display, \_UserCode, \_TextLink, \_Role, \_BannerSource,*

### *Return Value*

,

•

*listadsManageAffiliates(System.String, System.String, System.String, System.String)*

### *Parameters*

*\_cp, \_rp, \_userid, \_sessionid,*

### *Return Value*

,

•

*addadsNewAffiliate(System.String, System.String, System.String, System.String, System.String, System.String, System.String, System.String, System.String, System.String, System.String, System.String, System.String, System.String, System.String, System.String)*

### *Parameters*

*\_Company, \_UserName, \_Password, \_Email, \_HomePage, \_IsActive, \_Name, \_TaxID, \_Phone, \_Address, \_ClickThruPage, \_Country, \_City, \_State, \_Zip, \_Fax, \_Approved, \_mode, \_userid, \_sessionid, \_uc,*

### *Return Value*

,

•

*editadsEditAffiliates(System.String, System.String, System.String, System.String, System.String, System.String, System.String, System.String, System.String, System.String, System.String, System.String, System.String, System.String, System.String, System.String)*

### *Parameters*

*\_Company, \_UserName, \_Password, \_Email, \_HomePage, \_IsActive, \_Name, \_TaxID, \_Phone, \_Address, \_ClickThruPage, \_Country, \_City, \_State, \_Zip, \_Fax, \_Approved, \_mode, \_userid, \_sessionid, \_UserCode,*

### *Return Value*

,

- *retrieveAdvertiser(System.String, System.String, System.String)*

*Parameters*

*\_userid, \_sessionid, \_limitData,*

*Return Value*

,

- *retrieveAffiliates(System.String, System.String, System.String)*

*Parameters*

*\_userid, \_sessionid, \_limitData,*

*Return Value*

,

- *addAdsAddAffPstSale(System.String, System.String, System.String, System.String, System.String, System.String, System.String, System.String, System.String, System.String)*

*Parameters*

*\_AffiliateUserCode, \_BannerCode, \_PayTypeCode, \_SaleValue, \_ReferenceNumber, \_CountryOfSale, \_CommisionValue, \_SaleStatus, \_mode, \_userid, \_sessionid,*

*Return Value*

,

- *listAdsManageBanner(System.String, System.String)*

*Parameters*

*\_userid, \_sessionid,*

*Return Value*

,

- *retrievelistAdsManageBanner(System.String, System.String)*

*Parameters*

*\_userid, \_sessionid,*

*Return Value*

,

- *retrievelistAdsManageBanner(System.String, System.String, System.String)*





,

- *listTempPayment(System.String, System.String)*

*Parameters*

*\_userid, \_sessionid,*

*Return Value*

,

- *AdsDelete(System.String, System.String, System.String)*

*Parameters*

*\_delWhat, \_Code, \_mode,*

*Return Value*

,

- *editAdsGWPreference(System.String, System.String, System.String, System.String, System.String, System.String, System.String, System.String)*

*Parameters*

*\_GatewayCode, \_LoginId, \_GwPwd, \_TxnKey, \_mode, \_userid, \_sessionid,*

*Return Value*

,

- *addAdsUnNewPub(System.String, System.String, System.String, System.String, System.String, System.String, System.String, System.String, System.String, System.String, System.String, System.String, System.String, System.String, System.String, System.String, System.String, System.String, System.String)*

*Parameters*

*\_UserName, \_Password, \_Email, \_HomePage, \_IsActive, \_Name, \_CompanyName, \_Phone, \_Address, \_Country, \_City, \_State, \_Zip, \_Fax, \_CreditCardNo, \_CreditCardType, \_Expiry, \_TZ, \_LangPref, \_GatewayCode, \_WebsiteSummary, \_WebsiteDetails, \_mode, \_userid,*

*Return Value*

,

- *listAdsUnListPub(System.String, System.String, System.String, System.String, System.String, System.String, System.String, System.String)*

***Parameters***

***\_cp, \_rp, \_userid, \_sessionid, \_mode, \_AdCode, \_uc,***

***Return Value***

,

•

***listListCategories(System.String, System.String, System.String, System.String)***

***Parameters***

***\_cp, \_rp, \_userid, \_sessionid,***

***Return Value***

,

•

***editAdsEditFee(System.String, System.String, System.String, System.String, System.String)***

***Parameters***

***\_PublisherFee, \_FeeTerm, \_mode, \_userid, \_sessionid,***

***Return Value***

,

•

***listAdsManageReseller(System.String, System.String, System.String, System.String, System.String, System.String, System.String, System.String, System.String)***

***Parameters***

***\_userid, \_sessionid, \_modeForm, \_modeQS, \_usercode, \_CompanyName, \_UserName, \_Password, \_Email, \_Name, \_Phone, \_Address,***

***Return Value***

,

•

***addAdsNewResellerType(System.String, System.String, System.String, System.String)***

***Parameters***

***\_ResellerType, \_mode, \_userid, \_sessionid,***

***Return Value***

,



- *listAdsManageResellerType(System.String, System.String)*

*Parameters*

*\_userid, \_sessionid,*

*Return Value*

,

- *editAdsEditResellerType(System.String, System.String, System.String, System.String)*

*Parameters*

*\_ResellerType, \_mode, \_userid, \_sessionid,*

*Return Value*

,

- *advertiseOnNetwork(System.String, System.String, System.String, System.String, System.String, System.String, System.String)*

*Parameters*

*\_PType, \_BidAmout, \_DailyBudget, \_BannerCode, \_mode, \_userid, \_sessionid,*

*Return Value*

,

- *retrievelistAdsUnListPub(System.String, System.String, System.String)*

*Parameters*

*\_userid, \_sessionid, \_AdCatCode,*

*Return Value*

,

- *addAdsNetworkBidUn(System.String, System.String, System.String, System.String)*

*Parameters*

*\_BannerName, \_mode, \_userid, \_sessionid,*

*Return Value*

,

## NET.OnlineAdvertising.clsPlacements

Summary description for clsPlacements

### Methods

#### *Constructor:*

- *NET.OnlineAdvertising.clsPlacements*

- 

*addadsNewRegion(System.String, System.String, System.String, System.String, System.String, System.String)*

#### *Parameters*

*\_RegionType, \_Name, \_Comments, \_mode, \_userid, \_sessionid,*

#### *Return Value*

,

- *listadsManageZones(System.String, System.String)*

#### *Parameters*

*\_userid, \_sessionid,*

#### *Return Value*

,

- 

*addadsNewZone(System.String, System.String, System.String, System.String, System.String, System.String)*

#### *Parameters*

*\_Name, \_Width, \_Height, \_mode, \_userid, \_sessionid,*

#### *Return Value*

,

- 

*editadsEditRegion(System.String, System.String, System.String, System.String, System.String, System.String)*

#### *Parameters*

*\_Name, \_Comments, \_mode, \_RegionType, \_userid, \_sessionid,*

#### *Return Value*

,

- *editadsEditZone(System.String, System.String, System.String, System.String, System.String, System.String)*

*Parameters*

*\_Name, \_Width, \_Height, \_mode, \_userid, \_sessionid,*

*Return Value*

,

- *retrievelistadsBannerType*

*Return Value*

,

- *retrievelistadsManageZones(System.String, System.String, System.String)*

*Parameters*

*\_userid, \_sessionid, \_limitData,*

*Return Value*

,

- *retrievelistadsManageZonesUN(System.String, System.String, System.String, System.String)*

*Parameters*

*\_userid, \_sessionid, \_limitData, \_Role,*

*Return Value*

,

- *listadsManageRegion(System.String, System.String)*

*Parameters*

*\_userid, \_sessionid,*

*Return Value*

,

- *retrieveRegions(System.String, System.String, System.String)*

*Parameters*

*\_userid, \_sessionid, \_limitData,*

*Return Value*

,





- *retrievelistListCategories(System.String, System.String)*

*Parameters*

*\_userid, \_sessionid,*

*Return Value*

,

## **NET.OnlineAdvertising.clsCampaigns**

Summary description for clsCampaigns

### **Methods**

*Constructor:*

- *NET.OnlineAdvertising.clsCampaigns*
- *listadsManageCamaigns(System.String, System.String, System.String)*

*Parameters*

*\_userid, \_sessionid, \_status,*

*Return Value*

,

- *retrievelistadsManageCamaigns(System.String, System.String, System.String)*

*Parameters*

*\_userid, \_sessionid, \_dataLimit,*

*Return Value*

,

- *addadsNewCamaigns(System.String, System.String)*

*Parameters*

*\_Name, \_IsDefault, \_StartDate, \_EndDate, \_ShowDays, \_CampType, \_MaxImpressions, \_MaxClickThrus, \_ImpPerDay, \_StartHour, \_EndHour, \_Keywords, \_EmailReports, \_LastSentReport, \_ShowBrowser, \_ShowOS,*







**Parameters**

**\_Advertiser, \_StartDate, \_EndDate, \_Duration, \_GroupLevel1, \_GroupLevel2, \_UniqueType, \_mode, \_userid, \_sessionid, \_QType, \_FType,**

**Return Value**

,

- ***GetAccountStats(System.String)***

**Parameters**

**\_usercode,**

**Return Value**

,

- ***addadsPublisherTraffic(System.String, System.String, System.String, System.String, System.String, System.String, System.String, System.String, System.String)***

**Parameters**

**\_UserCode, \_StartMonth, \_StartYear, \_EndMonth, \_EndYear, \_mode, \_userid, \_sessionid,**

**Return Value**

,

- ***listAdsStatisticsExchange(System.String, System.String, System.String, System.String, System.String, System.String, System.String, System.String)***

**Parameters**

**\_UserCode, \_StartDate, \_EndDate, \_mode, \_userid, \_sessionid, \_Role,**

**Return Value**

,

- ***listAdsStatisticsAffiliate(System.String, System.String, System.String, System.String, System.String, System.String, System.String, System.String)***

**Parameters**

**\_Advertiser, \_StartDate, \_EndDate, \_GroupLevel1, \_GroupLevel2, \_UniqueType, \_mode, \_userid, \_sessionid,**

**Return Value**

,

- ***addAdsResellerReport(System.String, System.String, System.String, System.String, System.String, System.String, System.String, System.String)***

***Parameters***

***\_Rep, \_School, \_Student, \_Advertiser, \_mode, \_userid, \_sessionid,***

***Return Value***

,

- ***retrievelistadsManageRep(System.String, System.String)***

***Parameters***

***\_userid, \_sessionid,***

***Return Value***

,

- ***retrievelistadsManageSchool(System.String, System.String, System.String)***

***Parameters***

***\_userid, \_sessionid, \_Rep,***

***Return Value***

,

- ***retrievelistadsManageStudent(System.String, System.String, System.String)***

***Parameters***

***\_userid, \_sessionid, \_School,***

***Return Value***

,

- ***retrievelistadsManageAdvertiser(System.String, System.String, System.String)***

***Parameters***

***\_userid, \_sessionid, \_Student,***

***Return Value***

,

- ***listAdsListEarnings(System.String, System.String, System.String, System.String, System.String, System.String)***

***Parameters***

*\_mode, \_userid, \_StartDate, \_EndDate, \_sessionid,*

### *Return Value*

,

## **NET.OnlineAdvertising.clsLogs**

Summary description for clsLogs

## **NET.OnlineAdvertising.clsBilling**

Summary description for clsBilling

### **Methods**

#### *Constructor:*

- *NET.OnlineAdvertising.clsBilling*

- 

*addAdsPayment(System.String, System.String, System.String, System.String, System.String, System.String, System.String, System.String, System.String, System.String, System.String, System.String, System.String)*

#### *Parameters*

*\_PayType, \_CardType, \_Name, \_Address, \_CardNumber, \_Expiry, \_CCV2, \_mode, \_userID, \_UserCode, \_Role, \_sessionID, \_Status, \_OrderCode, \_FinalPrice,*

### *Return Value*

,

- 

*listadsTempOrder(System.String, System.String, System.String, System.String, System.String, System.String)*

#### *Parameters*

*\_userid, \_sessionid, \_StartDate, \_EndDate, \_display, \_MoId,*

### *Return Value*

,

- 

*listAdsTempPayment(System.String, System.String, System.String, System.String)*

#### *Parameters*

*\_userid, \_sessionid, \_StartDate, \_EndDate,*

***Return Value***

,

•

***listAdsTempPayment(System.String, System.String, System.String, System.String, System.String)***

***Parameters***

*\_userid, \_sessionid, \_StartDate, \_EndDate, \_MOId,*

***Return Value***

,

•

***listadsBillingHistory(System.String, System.String, System.String, System.String, System.String, System.String, System.String)***

***Parameters***

*\_advertiserid, \_mode, \_userID, \_sessionID, \_display, \_Role, \_StartDate, \_EndDate, \_status,*

***Return Value***

,

•

***listAdsAffiliateSalesLog(System.String, System.String, System.String, System.String, System.String, System.String)***

***Parameters***

*\_userid, \_sessionid, \_StartDate, \_EndDate, \_Display, \_PayType, \_Status,*

***Return Value***

,

•

***listadsAffiliateHistory(System.String, System.String, System.String, System.String, System.String, System.String, System.String, System.String)***

***Parameters***

*\_affiliateid, \_mode, \_userID, \_sessionID, \_StartDate, \_EndDate, \_Display, \_PayType, \_Status, \_Role,*

***Return Value***

,

- ***addAdsNewAdvPayment(System.String, System.String, System.String, System.String, System.String, System.String, System.String, System.String)***

***Parameters***

***\_AdvertiserID, \_OrderID, \_ReceiptID, \_PaymentAmount, \_PaymentType, \_mode, \_Role, \_userid, \_sessionid,***

***Return Value***

,

- ***addAdsNewAffPayment(System.String, System.String, System.String, System.String, System.String, System.String, System.String)***

***Parameters***

***\_AffiliateID, \_OrderID, \_ReceiptID, \_PaymentAmount, \_PaymentType, \_mode, \_userid, \_sessionid,***

***Return Value***

,

- ***addadsAssignCredits(System.String, System.String, System.String, System.String, System.String)***

***Parameters***

***\_UserCode, \_TotalCredits, \_mode, \_userid, \_sessionid,***

***Return Value***

,

- ***addadsTransferCredits(System.String, System.String, System.String, System.String, System.String, System.String)***

***Parameters***

***\_UserCode, \_UserCodeTo, \_TotalCredits, \_mode, \_userid, \_sessionid,***

***Return Value***

,

- ***listadsNetAdminHistory(System.String, System.String, System.String, System.String, System.String, System.String)***

***Parameters***

*\_publisherid, \_mode, \_userID, \_sessionID, \_StartDate, \_EndDate,*

***Return Value***

,

•

*editAds\_Hosting\_Plans(System.String, System.String, System.String, System.String, System.String, System.String, System.String, System.String, System.String, System.String, System.String, System.String, System.String, System.String, System.String, System.String)*

***Parameters***

*\_Tier1Imps, \_Tier1Price, \_Tier2Imps, \_Tier2Price, \_Tier3Imps, \_Tier3Price, \_Tier4Imps, \_Tier4Price, \_Tier5Imps, \_Tier5Price, \_mode, \_userid, \_sessionid, \_display, \_Display,*

***Return Value***

,

• *listAdsMsorder(System.String, System.String, System.String)*

***Parameters***

*\_userid, \_sessionid, \_MasterOrderID,*

***Return Value***

,

• *retrievelistAdsMsorder(System.String, System.String)*

***Parameters***

*\_userid, \_sessionid,*

***Return Value***

,

• *addAdsInvoice(System.String, System.String, System.String, System.String)*

***Parameters***

*\_mode, \_userid, \_sessionid, \_Moid,*

***Return Value***

,

•

*listAdsApproveSales(System.String, System.String, System.String, System.String)*

***Parameters***

*\_userid, \_sessionid, \_status, \_ID,*

***Return Value***

,

•

*editAdsEditApprove(System.String, System.String, System.String, System.String, System.String, System.String, System.String, System.String, System.String, System.String)*

***Parameters***

*\_BannerCode, \_PayTypeCode, \_SaleValue, \_ReferenceNumber, \_CountryOfSale, \_CommisionValue, \_SaleStatus, \_mode, \_userid, \_sessionid,*

***Return Value***

,

•

*editAdsRebid(System.String, System.String, System.String, System.String, System.String)*

***Parameters***

*\_MaxBidAmount, \_DailyBudget, \_mode, \_userid, \_sessionid,*

***Return Value***

,

•

*addAdsCreditAccount(System.String, System.String, System.String, System.String, System.String)*

***Parameters***

*\_PaymentAmount, \_mode, \_userid, \_UserCode, \_sessionid,*

***Return Value***

,

•

*addAdsPaymentUN(System.String, System.String, System.String, System.String, System.String, System.String, System.String, System.String, System.String, System.String, System.String, System.String, System.String)*

***Parameters***

*\_PayType, \_CardType, \_Name, \_Address, \_CardNumber, \_Expiry, \_CCV2, \_mode, \_userID, \_UserCode, \_Role, \_sessionID, \_Status, \_OrderCode, \_FinalPrice, \_Modules,*

## *Return Value*

,

## **NET.OnlineAdvertising.clsReference**

Summary description for clsReference

## **Methods**

### *Constructor:*

- *NET.OnlineAdvertising.clsReference*

- 

*listadsManageAffiliateCategories(System.String, System.String, System.String, System.String)*

### *Parameters*

*\_cp, \_rp, \_userid, \_sessionid,*

### *Return Value*

,

- 

*addadsNewAffiliateCategories(System.String, System.String, System.String, System.String)*

### *Parameters*

*\_CategoryName, \_mode, \_userid, \_sessionid,*

### *Return Value*

,

- 

*listadsManagePaytypes(System.String, System.String, System.String, System.String)*

### *Parameters*

*\_cp, \_rp, \_userid, \_sessionid,*

### *Return Value*

,

- 

*addadsAddPaytypes(System.String, System.String, System.String, System.String, System.String)*

### *Parameters*



*\_PayType, \_PayTypeOnScreen, \_mode, \_userid, \_sessionid,*

***Return Value***

,

•

*editadsEditPaytypes(System.String, System.String, System.String, System.String, System.String, System.String, System.String)*

***Parameters***

*\_PayType, \_PayTypeOnScreen, \_mode, \_userid, \_sessionid, \_PaytypeCode,*

***Return Value***

,

•

*editadsEditAffiliateCategories(System.String, System.String, System.String, System.String)*

***Parameters***

*\_CategoryName, \_mode, \_userid, \_sessionid,*

***Return Value***

,

•

*editadsEditAdCategories(System.String, System.String, System.String, System.String, System.String)*

***Parameters***

*\_AdCategoryName, \_Active, \_mode, \_userid, \_sessionid,*

***Return Value***

,

•

*addadsNewAdCategories(System.String, System.String, System.String, System.String, System.String, System.String)*

***Parameters***

*\_AdCategoryName, \_Active, \_mode, \_Role, \_userid, \_sessionid,*

***Return Value***

,

•

*listadsManageAdCategories(System.String, System.String, System.String, System.String, System.String)*

**Parameters**

**\_cp, \_rp, \_Role, \_userid, \_sessionid,**

**Return Value**

,

- **retrievelistadsManageAdCategories(System.String, System.String, System.String)**

**Parameters**

**\_userid, \_sessionid, \_Display,**

**Return Value**

,

- **retrievePaytypes(System.String, System.String)**

**Parameters**

**\_userid, \_sessionid,**

**Return Value**

,

- **retrievePubPaytypes(System.String, System.String)**

**Parameters**

**\_userid, \_sessionid,**

**Return Value**

,

- **editadsEditPreference(System.String, System.String, System.String, System.String, System.String, System.String, System.String, System.String, System.String, System.String)**

**Parameters**

**\_NotifySale, \_CookieLife, \_SignUpThanks, \_MassMailLetter, \_AffiliateLetter, \_AutoSalesApproval, \_AutoAffiliateApproval, \_AffiliateApprovalLetter, \_mode, \_userid, \_sessionid,**

**Return Value**

,

- **listAdsLang(System.String, System.String)**

**Parameters**

*\_userid, \_sessionid,*

***Return Value***

,

- *retrievelistAdsLang(System.String, System.String)*

***Parameters***

*\_userid, \_sessionid,*

***Return Value***

,

- *listMyPubChannels(System.String, System.String, System.String, System.String)*

***Parameters***

*\_CategoryID, \_mode, \_userid, \_sessionid,*

***Return Value***

,

- *listMyExchangeChannels(System.String, System.String, System.String, System.String, System.String)*

***Parameters***

*\_userid, \_sessionid,*

***Return Value***

,

- *listadsEditChannel(System.String, System.String, System.String, System.String)*

***Parameters***

*\_CategoryID, \_mode, \_userid, \_sessionid,*

***Return Value***

,

- *listaffEditChannel(System.String, System.String, System.String, System.String)*

***Parameters***

*\_CategoryID, \_mode, \_userid, \_sessionid,*

### *Return Value*

,

•

*editAds\_Xchange\_Pref(System.String, System.String, System.String, System.String, System.String)*

### *Parameters*

*\_CreditsPerImp, \_SignUpCredits, \_mode, \_userid, \_sessionid,*

### *Return Value*

,

• *total(System.String, System.String)*

### *Parameters*

*\_userid, \_sessionid,*

### *Return Value*

,

• *listAdsListGateway(System.String, System.String)*

### *Parameters*

*\_userid, \_sessionid,*

### *Return Value*

,

• *retrievelistAdsListGateway(System.String, System.String, System.String)*

### *Parameters*

*\_userid, \_sessionid, \_dispay,*

### *Return Value*

,

• *PersonalizedValue(System.String)*

### *Parameters*

*\_userCode,*

### *Return Value*

,

•

*editAdsNaPref(System.String, System.String, System.String, System.String, System.String, System.String, System.String, System.String, System.String)*

***Parameters***

***\_Commission, \_Exchange, \_Bonus, \_Image, \_mode, \_userid, \_sessionid, \_QRole, \_hidRole,***

***Return Value***

,

•

***addAdsNewChannel(System.String, System.String, System.String, System.String, System.String)***

***Parameters***

***\_AdCategoryName, \_Active, \_mode, \_userid, \_sessionid,***

***Return Value***

,